

Name: _____

Date: _____

Just for Fun (Unit 5)

A. Look at the pictures. Write the words. Then look at the gray boxes.



1											
---	--	--	--	--	--	--	--	--	--	--	--

2									
---	--	--	--	--	--	--	--	--	--

3								
---	--	--	--	--	--	--	--	--

4								
---	--	--	--	--	--	--	--	--

5										
----------	--	--	--	--	--	--	--	--	--	--

6						
---	--	--	--	--	--	--

7									
---	--	--	--	--	--	--	--	--	--



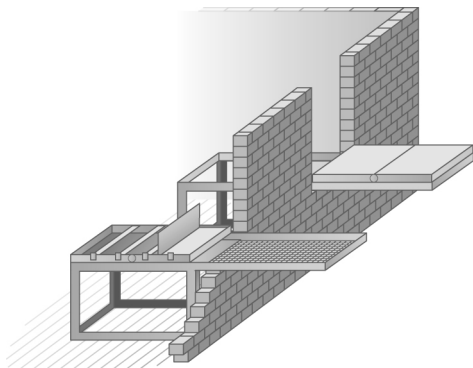
What's the new word? _____

B. Read about the machines. Then write the name of the machine on the line.



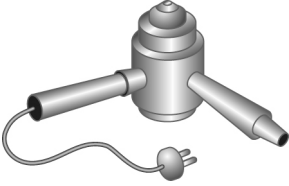
1. You use this machine to cook food and heat beverages fast. This first model is from 1947. It weighs over 750 pounds (340kg). Today's models weigh just 25 pounds (11.3kg)!

What is it? a microwave



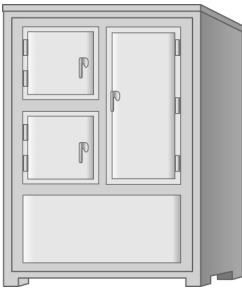
2. You can find this machine in almost every office. This model is from 1886. To use it, you open a window and put the machine outside. On a cloudy day, it takes one hour to make one copy! Today, these machines make hundreds of copies in seconds. And you don't have to open a window!

What is it? _____



3. People use this machine on wet hair. This early model is from 1920. It is made of metal and is very heavy. It's not easy to use. Today's plastic models are light, easy to use, and portable.

What is it? _____



4. This appliance is to keep food cold. This 1916 model is called an "ice box," because you have to put big pieces of ice inside. Today's model has a different name, and you don't have to buy any ice!

What is it? _____

